

Fig. 18



Fig. 20

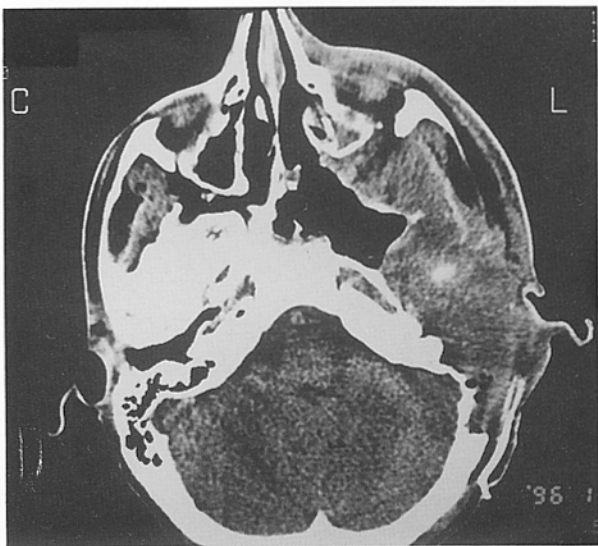


Fig. 19

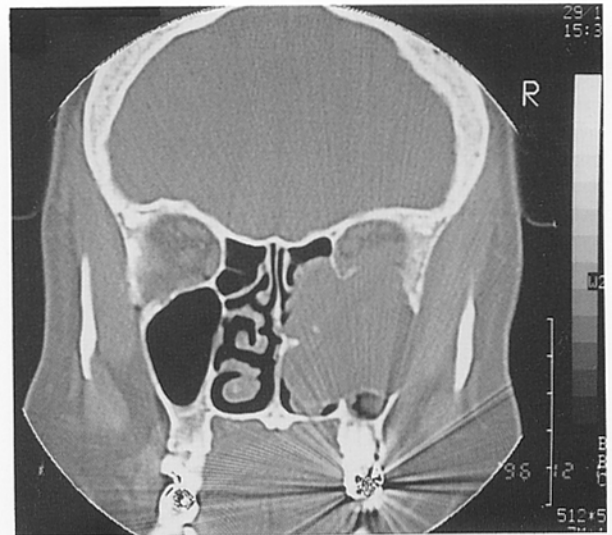


Fig. 21

Figure 23. Postoperative CT scan showing the craniotomy and the reconstruction of the orbit lateral wall and floor.

Case 5

Figure 24. Preoperative axial CT scan of a giant trigeminal schwannoma involving the Meckel's cave, the infratemporal fossa, the pterygopalatine fossa, the retro-orbital region, the petrous apex and the upper and mid clivus.

Figure 25. Preoperative MRI of the previous case. Encasement of the internal carotid artery by the tumor. The artery was preoperatively closed after balloon oc-

clusion test. Tumor removal was performed using a type B infratemporal fossa approach with orbito-zygomatic extension.

Figure 26. Postoperative CT scan showing the craniotomy and total tumor removal.

References

1. Donald PJ, ed: Infratemporal fossa - Middle cranial fossa approach. *Surgery of the Skull Base* (Chapter 16). Philadelphia, Lippincott-Raven, 1998; 309-339
2. Fisch U: The infratemporal fossa approach for nasopharyngeal tumors. *Laryngoscope* 1983; 93: 36-44
3. Fisch U, Mattox D: *Microsurgery of the Skull Base*, Stuttgart,